

# Annual

2013-2014

Report



SAN BERNARDINO COUNTY MEDICAL SOCIETY

Promoting the science and art of medicine, the care and well-being of patients, the protection of the public health and promoting the betterment of the medical profession.





## MEMBERSHIP & INFRASTRUCTURE

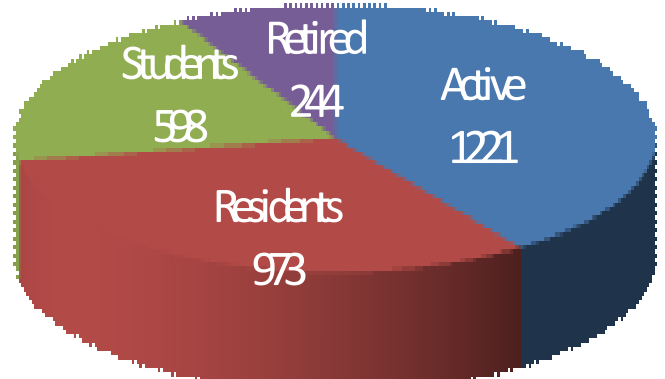
What a year 2013-14 was for the San Bernardino County Medical Society! With the successful implementation of our membership initiative with Faculty Physicians & Surgeons of LLUSM, SBCMS now has more than 1,200 active member physicians - a 40% increase over the previous year. We are now the seventh largest county medical society in California.

But the good news on membership does not end there. SBCMS now has **the most** medical student and resident members in the state - 1,571 in total! Special thanks for the great work and support from Loma Linda University School of Medicine and the resident program coordinators at Arrowhead Regional Medical Center, Kaiser Permanente, and Loma Linda University.

After 10 years in Riverside, SBCMS moved its office back to San Bernardino County with the purchase of a building in Redlands. The relocation was completed in May, and we were fully operational on June 1.

What a difference the new building and location has had on our organization. We have received nothing but rave reviews and comments from our physician leaders and members. Meetings are so much more convenient for our busy physicians and their staffs, and the SBCMS staff enjoys having physicians "drop by" to say hi. Many thanks to the SBCMS Board of Directors - especially Past President Dr. Leroy Ounanian and President Dr. Raman Poola - for their leadership in bringing SBCMS back home.

If increase in membership and a new home for



SBCMS wasn't enough during 2013-14, let's throw in the greatest threat to physicians and medicine in the last forty years with the trial attorneys initiating the proposition process to overturn MICRA. "No on 46" is the battle cry to defeat Proposition 46, which will be on the ballot for the November 4 election. Not only does this increase the cap on non-economic damages from \$250,000 to \$1.1 million, but includes unreasonable and confusing random drug testing of physicians and the mandated use of the CURES database system.

Nearly 1,000 organizations have joined together to defeat Proposition 46 - raising \$60 million to educate and inform California voters on the dangers of this proposition. Presentations to medical staffs, medical groups and other interested parties have and continue to take place. Television and radio ads will begin to appear to help voters find out the truth behind Proposition 46: higher malpractice awards, increased costs, decreased accessibility to your physician, and the loss of confidentiality for everyone. With your help we will fight to defeat Prop 46.

**THANK YOU SBCMS MEMBERS!**



# ADVOCACY

Critical issues affecting today's physicians are being decided in the legislative arena at a fast and furious pace. Health care reform, medical liability and insurance regulations are just a few of the vital issues being debated and voted on by decision-makers in Sacramento. CMA has some of the best lobbyists, lawyers and other advocates in the Capitol, but the most powerful weapon in advancing the cause of physicians and their patients is you. Hearing from a physician with experience from the frontlines of medicine can make all the difference for a legislator facing a complicated health care issue.

## Join the Fight to Protect Medicine

You don't have to be a political expert or know a legislator directly to serve as a Legislative Key Contact. You just need the desire to make an impact, and CMA will give you the rest.

## Quick and Easy

SBCMS/CMA will provide you with all the tools you need to quickly and effectively deliver your message to legislators, from talking points to sample letters.

## Strength in Numbers

Organized medicine is strongest when physicians unite together, to speak and be heard. The stronger we are, the greater the opportunity for success.

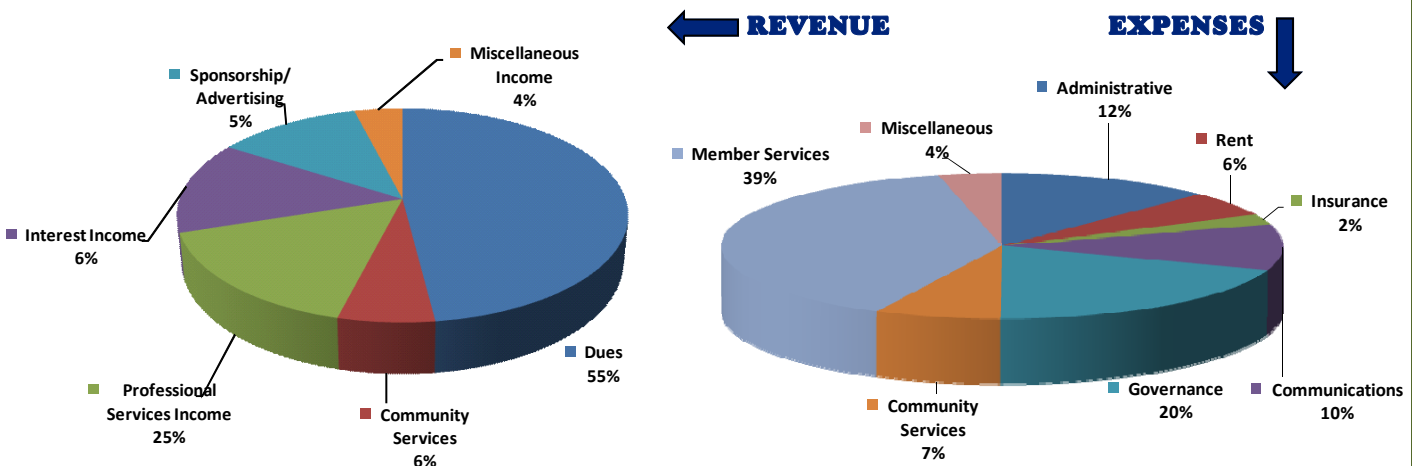
# AWARDS



**SBCMS Award Winners:** Damodara Rajasekhar, MD (*Presidential Award*); Lawrence D. Longo, MD (*Outstanding Contribution to Medicine*); Edwin Krick, MD (*Outstanding Contribution to the Community*); Leroy Ounanian, MD (*Outstanding Contribution to the Medical Society*); Dee Dee Schilt (*Outstanding Citizen*); and Amity Tung (*Bangasser Scholarship Recipient*)

# REVENUE & EXPENSES

Your SBCMS' financial position remains steady. Detailed financials are on file at the SBCMS office.



# COMMUNITY PROGRAMS

## HEALTHY LIFESTYLES AWARD PROGRAM

Each year Inland Wellness Information Network (IWIN) provides an opportunity for elementary schools in San Bernardino County to earn cash awards for their classes while learning the benefits of a health lifestyle. Teachers spend a block of time during class to assist their students in creating a video, book, song, wall hanging, etc. 13 classes participated this year from seven elementary schools. In May nine classrooms received grants between \$100-\$500 totaling \$2,300. This event takes place each year.



## MEDICAL RESERVE CORPS (MRC)

The MRC remained busy with trainings and drills preparing for the inevitable “big one” and provided CPR trainings, flu vaccinations and medical aid at 25 events. Policies/procedures were restructured, MRC equipment categorized, and additional County entities were familiarized on our purpose and how to access the volunteers. The Public Health, EMS, hospitals, sheriff, fire, and other community groups utilize MRC each year. 60 volunteers gave 3,561 hours toward training, while offering 9,165 hours to local deployments. Grants received: NACCHO \$3,500; HPP \$10,000, and NORCAP \$3,000.



## SOUTHERN CALIFORNIA MEDICAL MUSEUM

- **Boy Scout Medicine Merit Badge Workshops** – These highly successful workshops were provided three times this year with two classes offered per day. A total of 89 Boy Scouts took part in the course.
- **Museum Tours** – Schools and groups of all ages and sizes requested docent lead tours. The museum website was updated and received numerous hits. A Facebook page was created as well. Because of the increased interest, our docents were working overtime to handle all the requests. But with the move of the Medical Society all that came to a halt in the second half of the year while the committee contemplated how to pack and move the museum to its new home—a portion of a large building donated by Western University of Health Sciences. Historical Committee members and other volunteers worked for a month to pack and label every item in the museum. The museum will reopen sometime in 2015.



# LEADERSHIP



### Executive Committee (pictured from l to r)

Raman Poola, MD, President; M. Daniel Wongworawat, MD, President-Elect; Marti Baum, MD, Vice President; Michael Sequeira, MD, Secretary; Eric Hansen, DO, Treasurer; and Leroy Ounanian, MD, Past President

### Board of Directors

Clint Adams, DO  
Pamela Anderson, MD  
Mark Bai, MD  
Rodney Borger, MD  
Paul Bruton, DO  
Charles Chen, MD  
Victor Ching, MD

Adrian Cotton, MD  
Ryan Eggers  
Dev GnanaDev, MD  
Eric Hansen, DO  
Noel Nepomuceno, MD  
Maxwell Ohikhaure, MD  
David Quam, MD

Kristina Roloff, DO  
Maira Simental, MD  
John Testerman, MD  
Christopher Tsai, MD  
Webster Wong, MD  
Les Yonemoto, MD

### Staff

Jim Peterson, Exec. Dir.  
Alex Bell  
Lucy Garcia  
Debbie Long  
Linda Myers  
Jenise Solorio